

MODULAR WALLS

a simple & ingenious
system for architects,
designers, shop-fitters
& DIY homeowners.

SIMPLYWOOD

for more information
visit us at:

Precinct 75
Suite 9, 75 Mary St
St Peters, NSW 2044

Email: info@simplywood.com.au

Phone: 1300 27 47 87

www.SimplyWood.com.au

www.NorthernRiversTimber.com.au





- ✓ Sustainable Australian Timber
- ✓ Reclaimed Hard & Softwoods
- ✓ Locally Made
- ✓ Bespoke Appearance
- ✓ Unique Design
- ✓ Fast Installation
- ✓ Minimal Waste
- ✓ Easy Transportation
- ✓ Australia Wide Delivery
- ✓ Range of Styles

"We went with the "Weathered Face Sleeper Panels", and the product blew our expectations out of the water. Beautiful, rustic, recycled timber."

Instant Cladding



SIMPLE SYSTEM

Our innovative modular walls combine the bespoke qualities of age old timbers with the convenience of prefab construction.

This system makes our feature walls ideal for commercial applications and perfect for residential projects, including DIY.

These stunning reclaimed hardwoods are supplied in planks attached to a charcoal backing board, offset in a partial lip system for easy installation.



Recycled timber is a great choice in design.

Not only is it visually appealing and an acoustic insulator, it also ticks all the environmental and sustainability boxes.

The timbers we recycle come from various sources, such as the demolition of houses and buildings and from the salvage of railway sleepers and transoms.

The qualities found in reclaimed timbers are unlike those of new timber. This is particularly apparent in hardwoods like Ironbark, Tallowwood, Redgum, Brushbox and Blackbutt.

The massive trees used in construction in bygone eras were potentially centuries old and although logging of old growth forests is fortunately now a thing of the past, the use of these beautiful timbers is not.

It is entirely feasible that the timber in some of our wall panels was around long before our cities were.

Now there's something to think about...

Good Wood

STYLISH & ELEGANT



WHEN PREFAB BECOMES FABULOUS.

Using prefabrication materials, or "prefab", dramatically speeds up construction time, lowers material costs and increases quality assurance.





Recycled timber can be difficult to specify in design. From sourcing to installing, there can be many variables which can make it a risky choice for the designer or architect.

We have transformed a product that has been traditionally difficult to work with into a system that maintains absolute uniqueness whilst providing a standardised appearance and drastically reduced on-site labour.

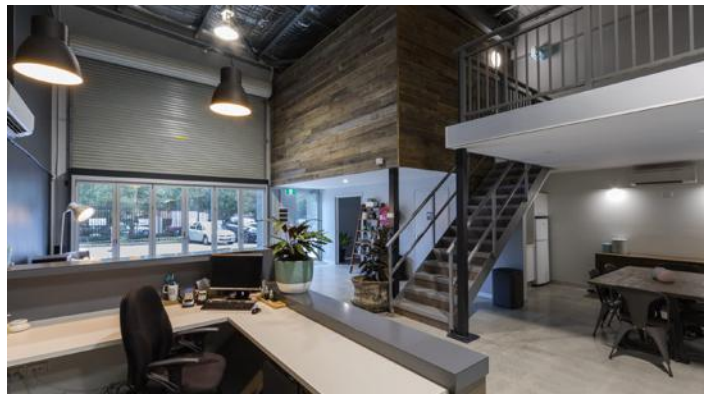
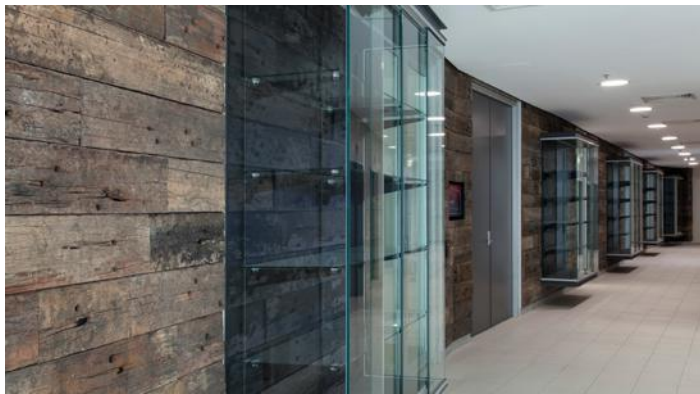
This means that when you specify our products you can be confident that the overall finished look is exactly what you expected.

Our cladding system is immensely popular and features in a growing number of high profile projects across the country.

HOSPITALITY



CORPORATE



SALONS





Timber walls are a wonderful way to add eye-catching dimension to a space, as well as ultimately achieving a standalone work of interior art.

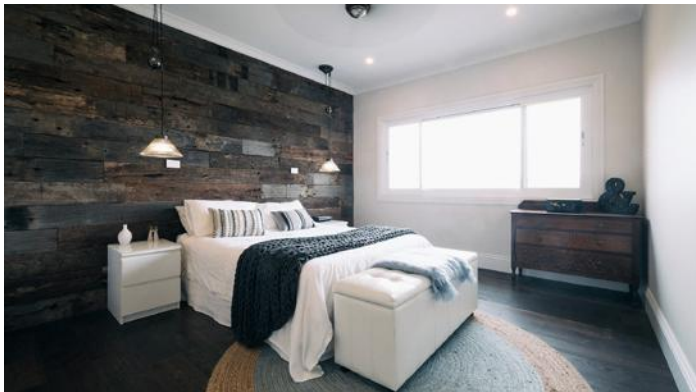
Be it high-end multi-residential or the humble man-cave, our panels provide a simple means of incorporating the warmth, texture and organic elegance of timber into modern home design.

Combining style and sustainability, timber feature walls can be used to add to the ruggedness of rustic designs or harmonise with modern clean lines.

Our panels come in a variety of key styles and finishes, each suited to diverse uses and spaces.

A wood wall is a versatile addition that can be both neutral & dramatic.

BEDROOMS



KITCHENS



LIVING SPACES



ALFRESCOS



**ALL PANELS
2400 X 180MM**

Each panel comes in a set size of 2400mm x 180mm, by approximately 25mm thick.

Varying lengths of recycled timbers are attached to an offset ply backing board, forming a lip system.

The face timber comes in various sizes, but always equals the 180mm panel size. [Eg. 1 x 180mm, 2 x 90mm, 3 x 60mm, (1 x 130mm + 1x 50mm), etc.].

The Panels



Installation



- To install the panels, always start at the bottom, left hand corner of your wall.
- Start with your first 2.4m length and simply screw or nail through the exposed ply lip on the top of the panel into the studs on your wall.
- Continue to the end of the first row. Cut the last board to fit and start the next row with the off-cut from the previous row.
- The next board stacks on top and hides your fixings.
- We supply matching cover strips to conceal the top ply lip or block edges and returns.
- It's very simple and our website has some basic videos to show you how. We're happy to explain it if you'd rather give us a call.



for more information

Visit us at Precinct 75
Suite 9, 75 Mary St
St Peters, NSW 2044



info@simplywood.com.au
sales@northernriverstimber.com.au



1300 27 47 87



www.NorthernRiversTimber.com.au
www.SimpleWood.com.au

NATIONWIDE DELIVERY

We deliver to freight depots all
over Australia.